

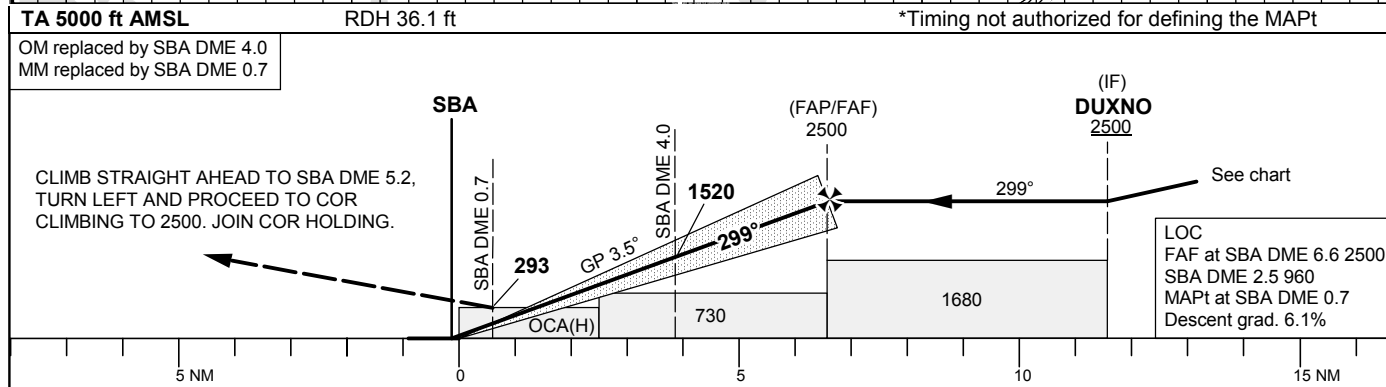
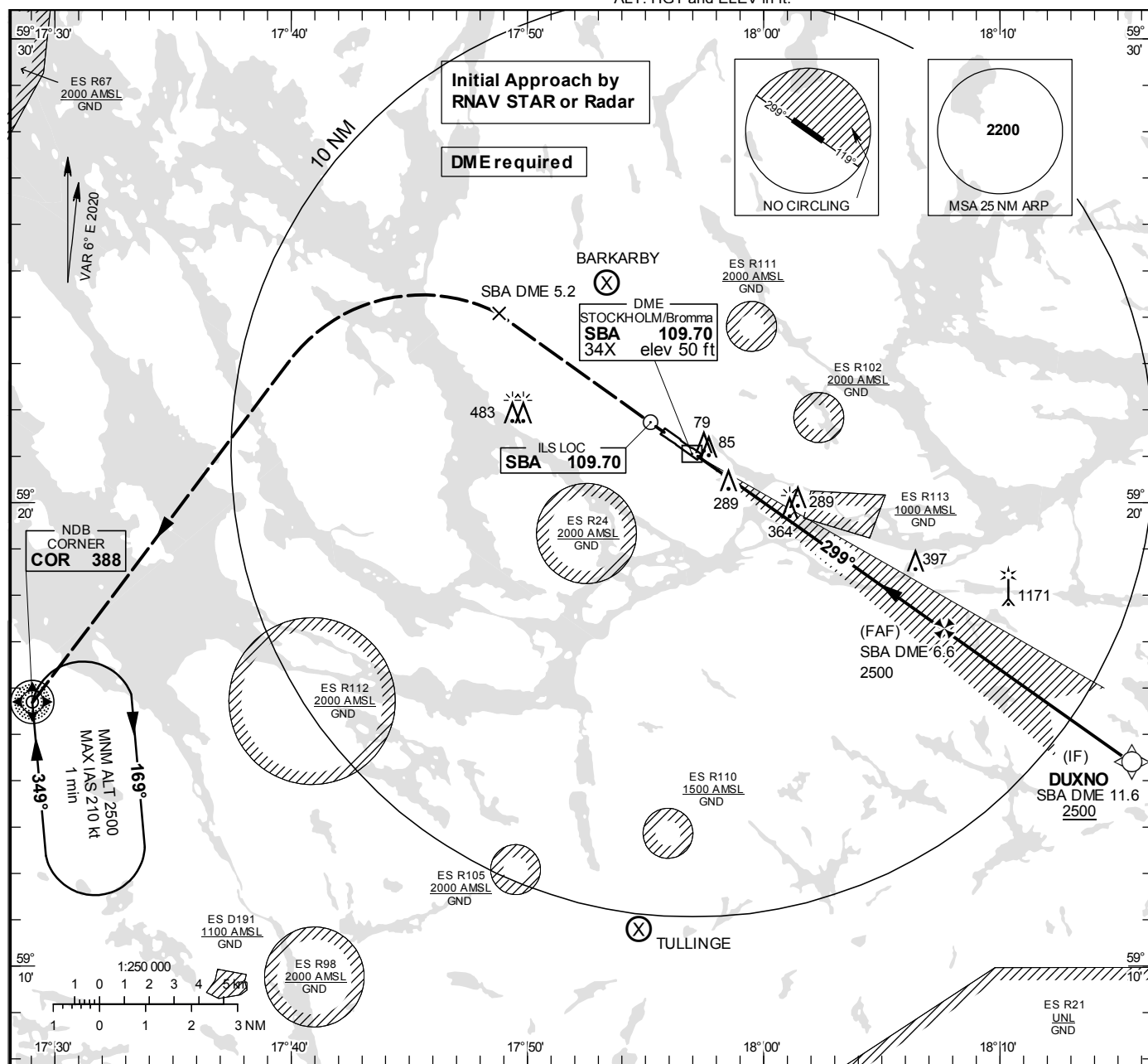
STOCKHOLM/Bromma

ILS or LOC RWY 30

BROMMA TOWER	118.105
STOCKHOLM APPROACH	120.155
BROMMA ATIS	122.455

**THR ELEV 42.8 ft, AD ELEV 47 ft**  
OCH are related to THR.  
Circling OCH are related to AD ELEV.  
BRG are MAG  
ALT, HGT and ELEV in ft.

**INSTRUMENT  
APPROACH  
CHART – ICAO**



OCA (H)				Final approach		LOC Distance FAF-MAPt 5.9 NM*				
Cat of ACFT	A	B	C	DME SBA	NM	6	5	4	3	2
Straight-in Approach	CAT I	221(178)	232(189)	243(200)	ALT	ft	2263	1892	1520	1148
	LOC	550(500)			GS	kt	80	100	120	140
Circling SW RWY				Time	min:s	4:27	3:34	2:58	2:33	2:14
				Rate of descent	ft/min	495	620	745	865	990

CHANGE: Editorial